

Electrophoresis, Blotting and Immunodetection

Gel visualisation, protein stains, Coomassie® based

Coomassie® protein gel staining solution, EZ-Run



Ready-to-use solution for highly sensitive staining of proteins separated in polyacrylamide gels. Detection is linear over two orders of magnitude with as little as 5ng protein detected.



EZ-Run protein gel staining solution contains Coomassie® Brilliant Blue G-250. Due to the property of the dye to form colloidal particles, proteins are preferentially stained without significant background staining of the gel matrix. The stain does not contain toxic methanol or acetic acid and it produces rapid destaining with simple water washes. Sensitivity: 5ng BSA in 10% SDS-PAGE, 1.0mm thick gel, well width 3mm. Tested for staining sensitivity in mini-gels using purified proteins and Protein Molecular Weight Standards.

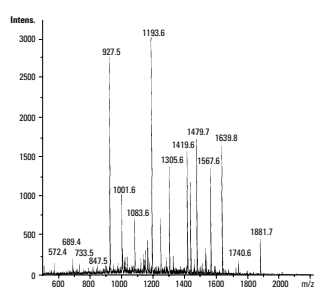
Catalogue No	Quantity
BPE3620-1	1L
BPE3620-4	4L

GelCode Blue safe protein stain, Thermo Scientific Pierce



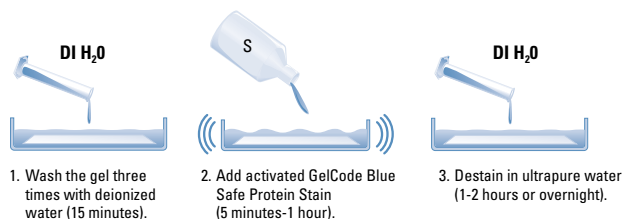
Thermo Scientific GelCode Blue

Safe Protein Stain is fast and sensitive. A mixture of proteins (myosin, β -galactosidase, phosphorylase B, BSA, ovalbumin, carbonic anhydrase, soybean trypsin inhibitor, lysozyme and aprotinin) was electrophoresed on 4-20% Precise protein gels. The gels were stained with GelCode Blue Safe protein stain for 5min, 15min and 1hr. All gels were destained for 1hr in ultra pure water. **Lane 1:** 1,000ng; **Lane 2:** 500ng; **Lane 3:** 250ng; **Lane 4:** 125ng; **Lane 5:** 63ng; **Lane 6:** 31ng; **Lane 7:** 16ng and **Lane 8:** 8ng.



Mass spectrometry (MS)-compatible.

BSA (2 μ g) was electrophoresed on a 4-20% Thermo Scientific Precise protein gel (PN25224) and stained with GelCode Blue Safe stain for one hour. BSA bands were excised from the gel and prepared for MALDI-MS analysis using the Thermo Scientific In-Gel Tryptic digestion kit (PN89871). Samples were purified using ZipTip™ pipette tips (Millipore) before MS analysis on an LC/MSD Trap XCT (Agilent Technologies).



Thermo Scientific GelCode Blue Safe protein stain protocol.

A safe, reliable and cost-effective stain for proteins

- Versatile - compatible with mass spectrometry, 2D gel staining, nitrocellulose and PVDF membrane staining, and quantitative densitometry
- Sensitive - detect down to 9ng of protein/band using a standard protocol
- Fast - standard protocol provides results in ~15min; a quick microwave protocol provides excellent results in 5min
- Outstanding signal-to-noise ratios - low background
- Convenient - no fixation step necessary; destain with water
- Easy to use - add activator crystals, shake and stain

Thermo Scientific GelCode Blue safe protein stain is a Coomassie® Brilliant Blue G-250-based stain that is non-hazardous, odourless, non-corrosive to skin and non-flammable.

Catalogue No	Description
PN24594	GelCode Blue safe protein stain, 1L Sufficient reagent to stain up to 40 to 50 mini-gels
PN24596	GelCode Blue safe protein stain, 3.5L Sufficient reagent to stain up to 140 to 175 mini-gels

Coomassie® Blue G-250, colloidal stain solution



Protein detection.



Catalogue No	Quantity
BPE3000-001	1L
BPE3000-005	5L

Pre-mixed and ready to use our colloidal Coomassie® Blue DOES NOT require the use of methanol and acetic acid for destaining identified protein bands. (Shake product prior to use).

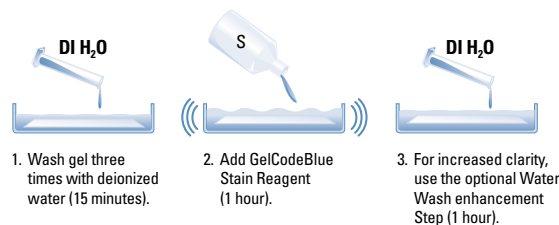
Coomassie® is a registered trade trademark of ICI plc.

GelCode Blue stain reagent, Thermo Scientific Pierce



A ready to use stain that does not require destaining.

- Bands develop before your eyes and can be viewed directly in the staining tray
- Some protein bands visible to 8ng
- No sensitivity loss from over-destaining because the destaining step is eliminated
- Wide linear range for densitometric gel analysis
- Optional water wash enhancement step results in crystal-clear background and increased sensitivity
- Compatible with MALDI-TOF analysis
- Compatible with sequence analysis



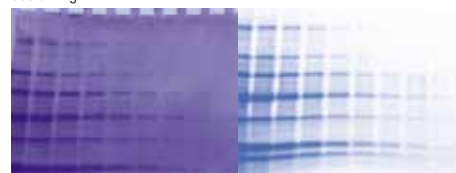
Thermo Scientific Pierce GelCode Blue staining protocol.

Traditional Coomassie stain Thermo Scientific GelCode Blue stain reagent



Staining time: 1 hour
No bands observed before destaining

Staining time: 1 hour
Bands visible in the staining tray



After destaining 1 hour in methanol:acetic acid

After 1 hour of water wash. Excellent sensitivity to 8ng.

Catalogue No	Description
PN24590	GelCode Blue stain reagent, 1L Sufficient for staining up to 25 SDS-PAGE mini-gels (80 x 100mm)
PN24592	GelCode Blue stain reagent, 3.5L Sufficient for staining up to 175 SDS-PAGE mini-gels (80 x 100mm)