

Filtration

transfer membranes

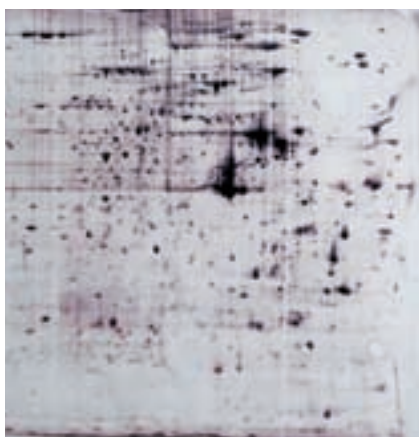


Standard immunodetection* method on Immobilon™-P.



Rapid immunodetection method on Immobilon™-P.

Prepared by tank transfer using BSA as blocking agent. BCIP/NBT is the substrate used for visualisation.



2-D electrotransfer onto Immobilon™-P using silver stain method



Transfer membranes, PVDF, blotting, Immobilon™



Immobilon™-P

- For general immunodetection and amino acid analysis
- Rapid immunodetection method reduces detection time by two hours
- High mechanical strength for easy handling

Immobilon™-FL

- The first transfer membrane optimised for fluorescence applications
- Extremely low background
- Compatible with all commonly used fluorescent probes
- Can be used at all excitation and emission wavelengths
- Ideal for multiplexing

High protein binding 0.45µm membranes with low backgrounds. Eliminates blocking and subsequent wash steps in Western blots with rapid immunodetection protocol that does not compromise specificity or sensitivity. Suitable for chromogenic chemiluminescent, chemifluorescent and radioactive detection. Transfer proteins from a variety of gel matrices by electroelution. Immobilon™-P offers increased solvent and staining capabilities and has a higher signal to noise ratio than does nitrocellulose. High mechanical tensile strength allows easy handling without cracking or breaking.

Technical Specification - Specific

	Immobilon™-P	Immobilon™-FL
Description	The original PVDF membrane for Western, dot and other protein blots	Optimised for fluorescent Immunodetection applications
Material	Hydrophobic PVDF	Hydrophobic PVDF
Pore size, µm	0.45	0.45
Applications	Western blotting, binding assays, amino acid analysis, N-terminal protein sequencing, dot/slot blotting, glycoprotein visualisation, lipopolysaccharide analysis	Western blotting, dot/slot blotting
Detection	Chemiluminescent, chromogenic, radioactive	Fluorescent, chemifluorescent, chromogenic, chemiluminescent
Protein binding capacity, mg	Insulin: 85 BSA: 131 Goat IgG: 294	Insulin: 85 BSA: 131 Goat IgG: 131
Compatible stains	Coomassie® Brilliant Blue, amido black, india ink, Ponceau-S red, colloidal gold, GPTS, toluidine blue, transillumination, Sypro® Ruby	Coomassie® Brilliant Blue, amido black, Ponceau-S red, GPTS

All proteins may not behave the same on a membrane surface; variability in properties such as charge, density, conformation, or hydrophobicity may necessitate use of another Immobilon™ PVDF membrane for Western blotting.

0.45µm Immobilon™-P

Catalogue No	Legacy No	Alt. No	Format	Dimensions, mm	Pack qty
10408793	-	IPVH08100	Sheets	80 x 100	10
10384511	-	IPVH15150	Sheets	150 x 150	10
10180771	-	IPVH20200	Sheets	200 x 200	10
10344661	-	IPVH00010	Roll	265 x 3,750	1

0.45µm Immobilon™-FL

Catalogue No	Legacy No	Alt. No	Format	Dimensions, mm	Pack qty
10599942	-	IPFL10100	Sheets	100 x 100	10
10113432	-	IPFL20200	Sheets	200 x 200	10
10452792	-	IPFL00010	Roll	265 x 3,750	1

For our full range of Millipore transfer membranes please visit our website

